

Assembly instructions for 6ft WC Module.

Fasteners.

WC-6.1

Tools needed:

- (1) Hammer
- (1) Power drill
- (1) Level
- *Suggested 18 guage Brad Gun with 1/4" brad nails will make install easier.

Parts List:

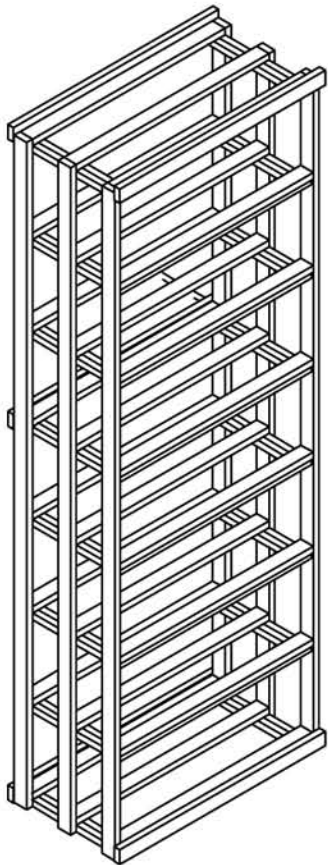


- (6) 2 1/2" Phillips screws for attaching to wall.
- (3) 1/4" Joining Screws to attach to other modules.
- (36) 1/4" Shelf Screws

(30) nails

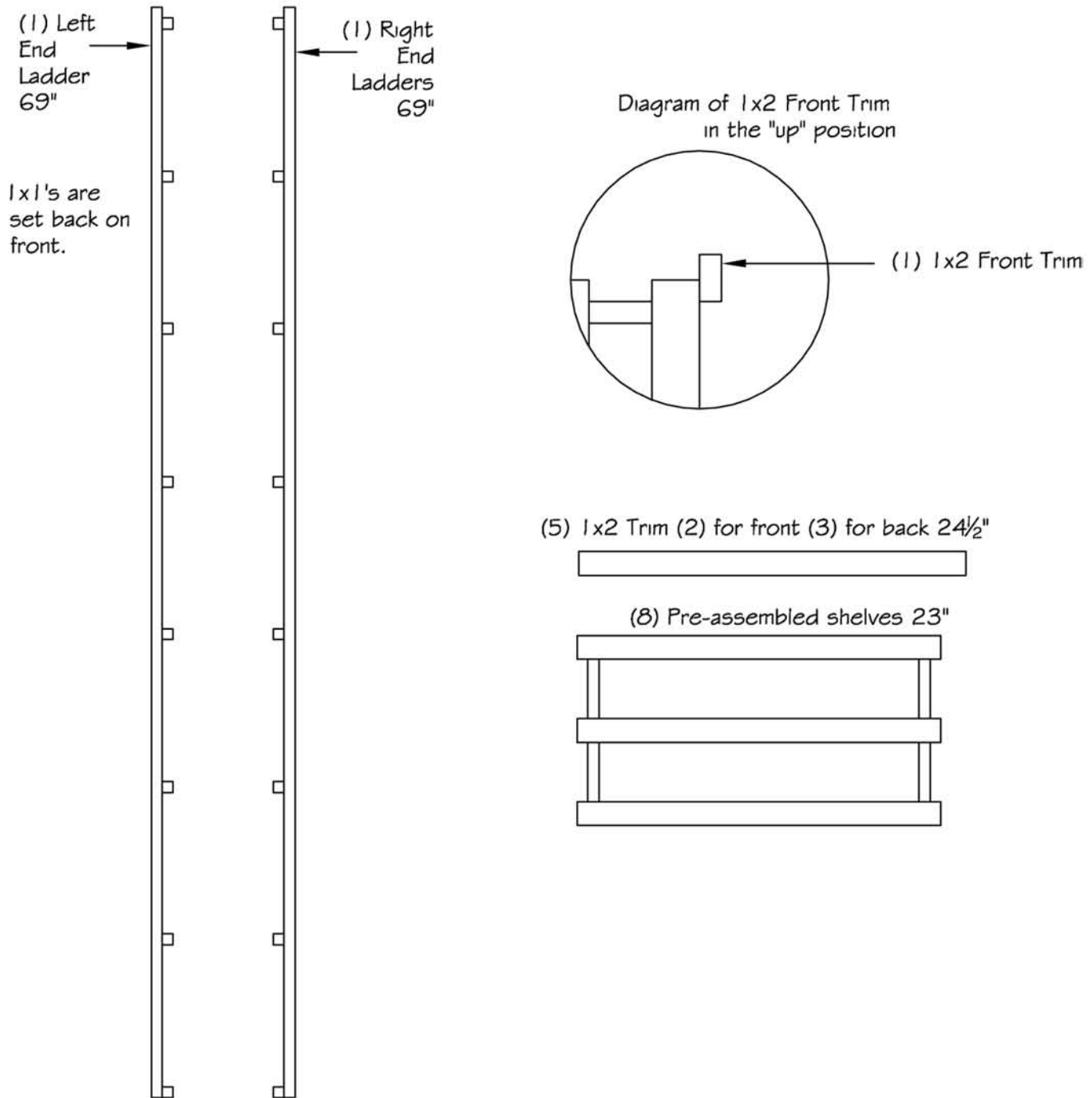


(8) Drywall Inserts

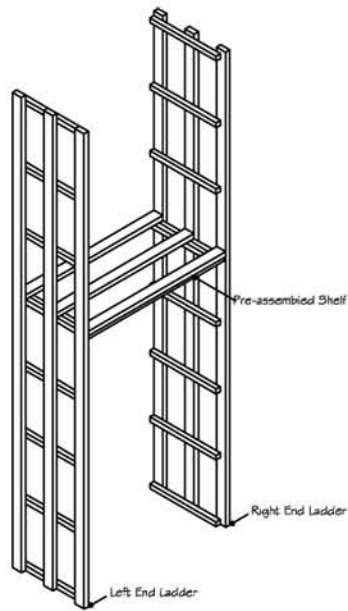


Assembly instructions for 6ft WC Module. Racking.

WC-6.1



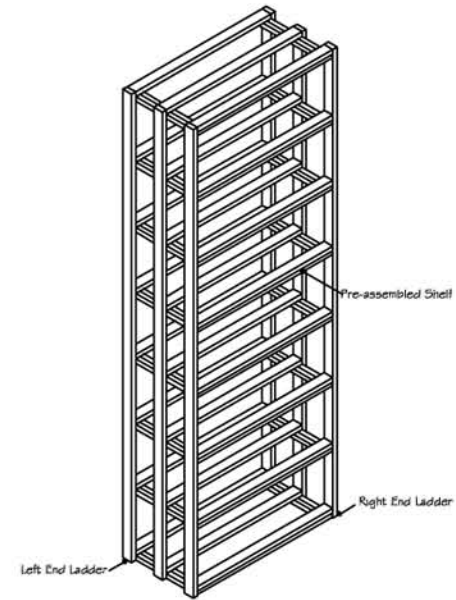
step 1



Step 1: (Attaching middle shelf to end ladders)

Arrange the right and left end ladders, making sure the set back on the rungs are facing forward. Place one pre-assembled shelf on the fifth rung. The front of the shelf has a 1x1 trim piece fastened under the 1x2 cross support. From the inside, either brad nail or screw the shelves onto the rung in two places.

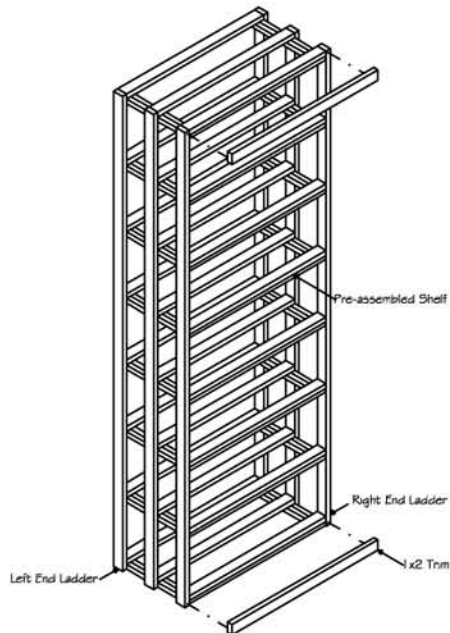
step 2



Step 2: (Attaching remaining shelves to end ladders)

Place the other seven shelves onto the remaining seven rungs and attach in the same way as in Step 1. Make sure the shelves have the trim pieces are facing the front.

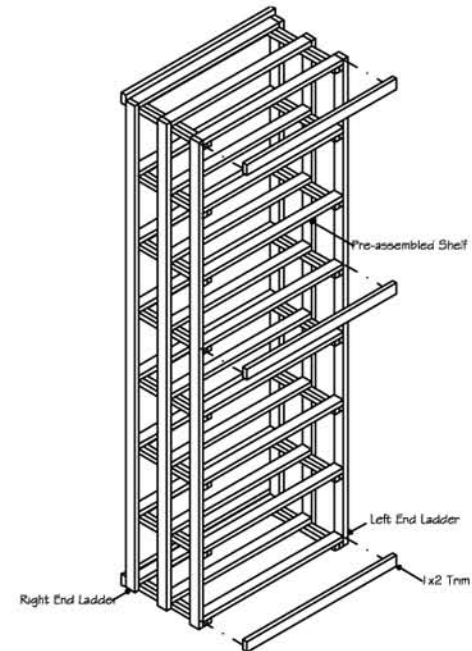
step 3



Step 3: (Attaching 1x2 trim to front of rack)

Take two of the 1x2x2 1/2" trim pieces and attach them to the top and bottom of the rack. The top trim piece is attached so that it extends 1 3/8" above the rack.

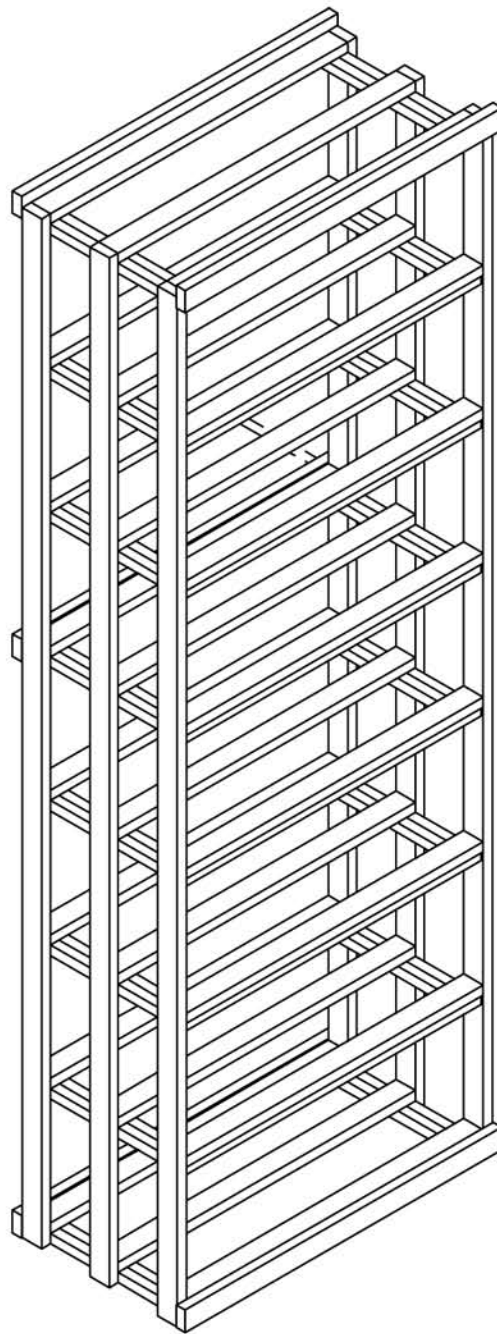
step 4



Step 4: (Attaching 1x2 trim to back of rack)

Take the last three 1x2x2 1/2" trim pieces and attach them to the 1st, 5th and 8th shelf from the bottom to the top. All of these should be placed so the remaining trim is up. The exposed area of the trim will be used to screw through into the wall.

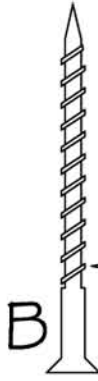
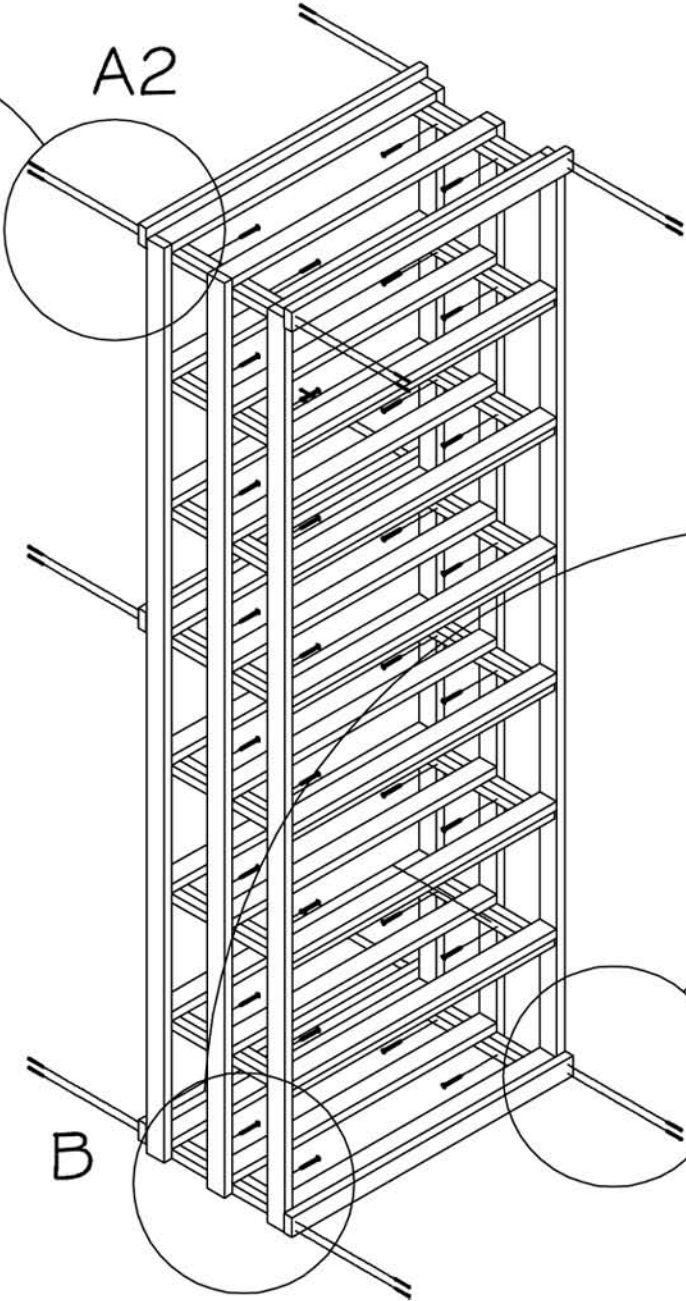
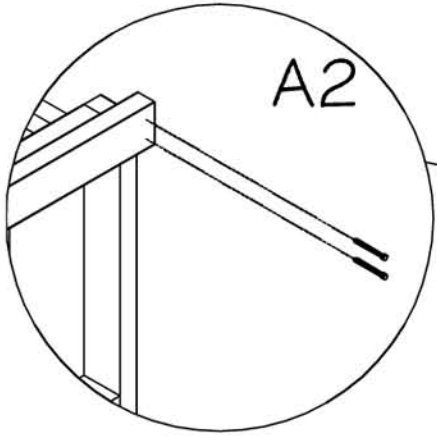
Step 5 Finish



Step 5: (Finish)

Fasten to the wall through the back supports using the 2½" screws and using a level to make sure the rack is mounted square on the wall.

Fastener Placement Guide



(30) nails
-Nail one at every point where the front and back spacer bars intersect a ladder as shown.

(36) shelf screws
-Place shelf on 1x1's and screw through 1x1's from the side.

